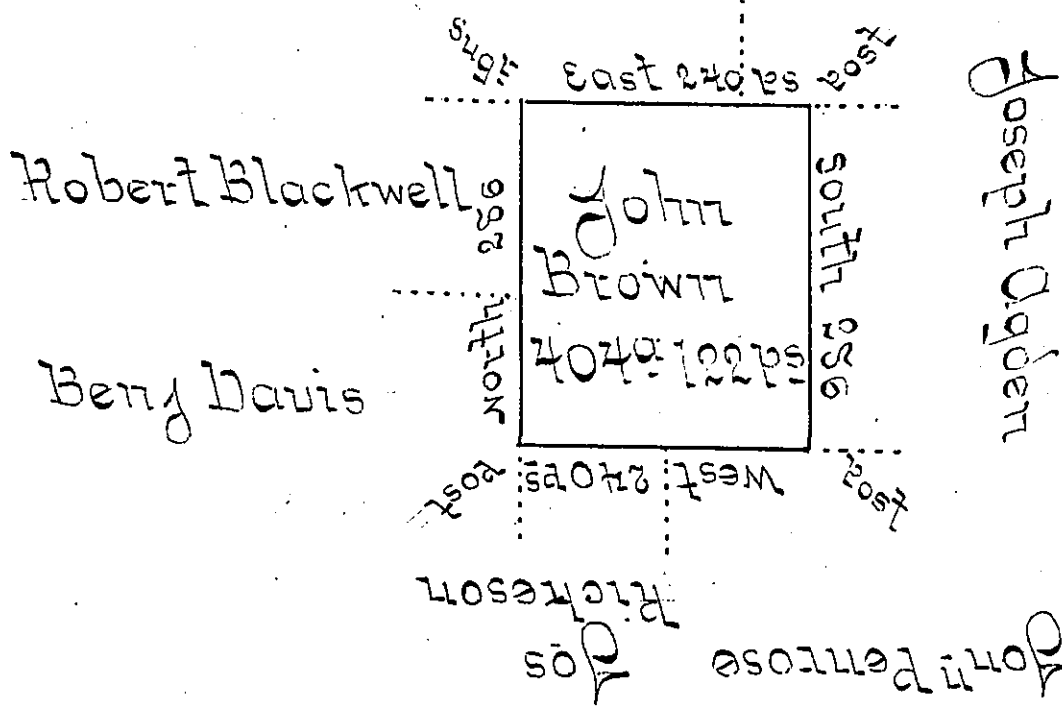


Benj^l. Gibbs John Gill



Situate on the East Side of French Creek in Allegheny County
 Containing 404° 122 Perches and allowance of six P
 Cent for Roads &c. Surv^d the 13th day of November -
 1794 In pursuance of a Warrant dated 18th day of April
 1792 -

Wm Power D.Y.S.

To Danl Brodhead Esq^r }
 Surveyor General - }

IN TESTIMONY that the above is a copy of the original remaining on file in
 the Department of Internal Affairs of Pennsylvania, made
 conformably to an Act of Assembly approved the 16th day of
 February, 1833, I have hereunto set my Hand and caused
 the Seal of said Department to be affixed at Harrisburg,
 this — second — day of — July — 1901. -

Jamean Latta
 Secretary of Internal Affairs.